

Happy 40th Anniversary!

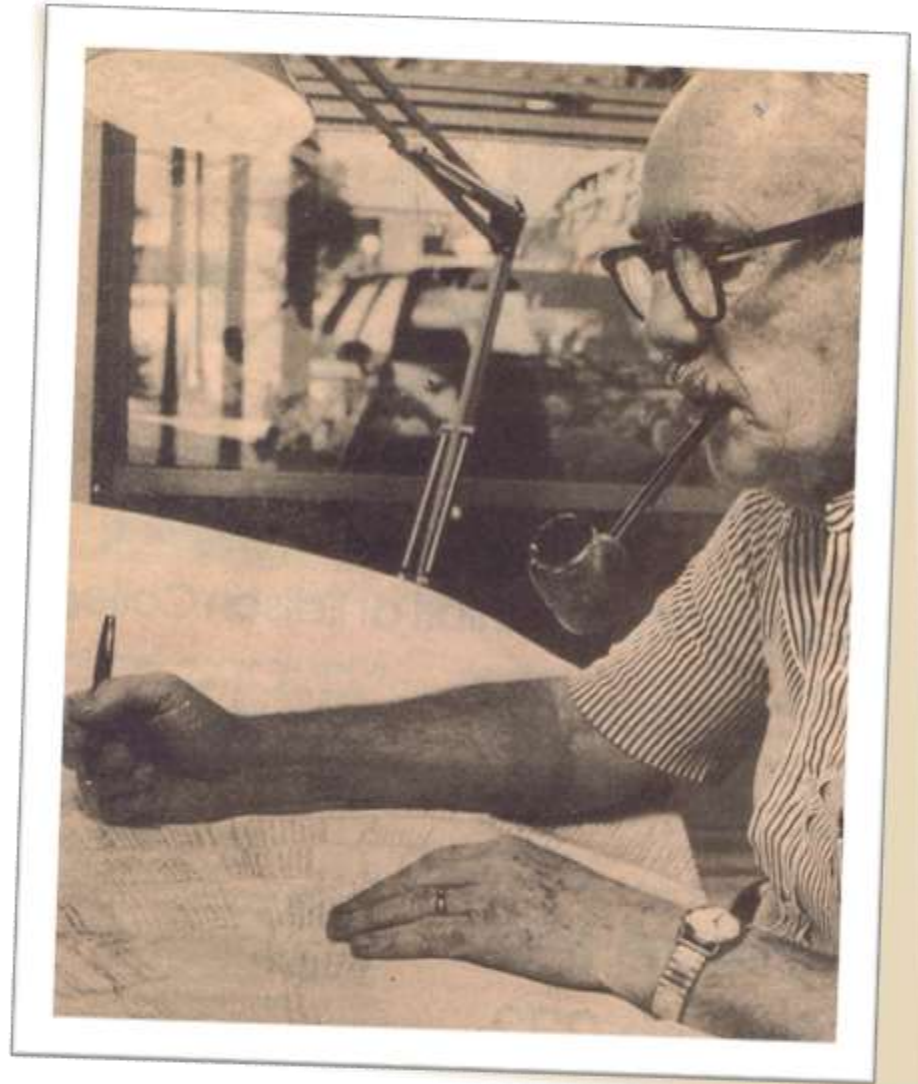
November 25, 1976 – November 25, 2015



**Lee County
Genealogical Society**

November 25, 1975

*A small group of Lee
County residents
interested in genealogy
meet at the home of
Ernest England
and discussed their
family history research.*



Ernest England



Back Row: Carolyn Ford, Betty Bohrer, Helen Simons
Front Row: Joan Dancy, Lorraine Panozzo, Thelma Macone, Don McMillen

Salt Lake City Trip

June 1988 Picnic



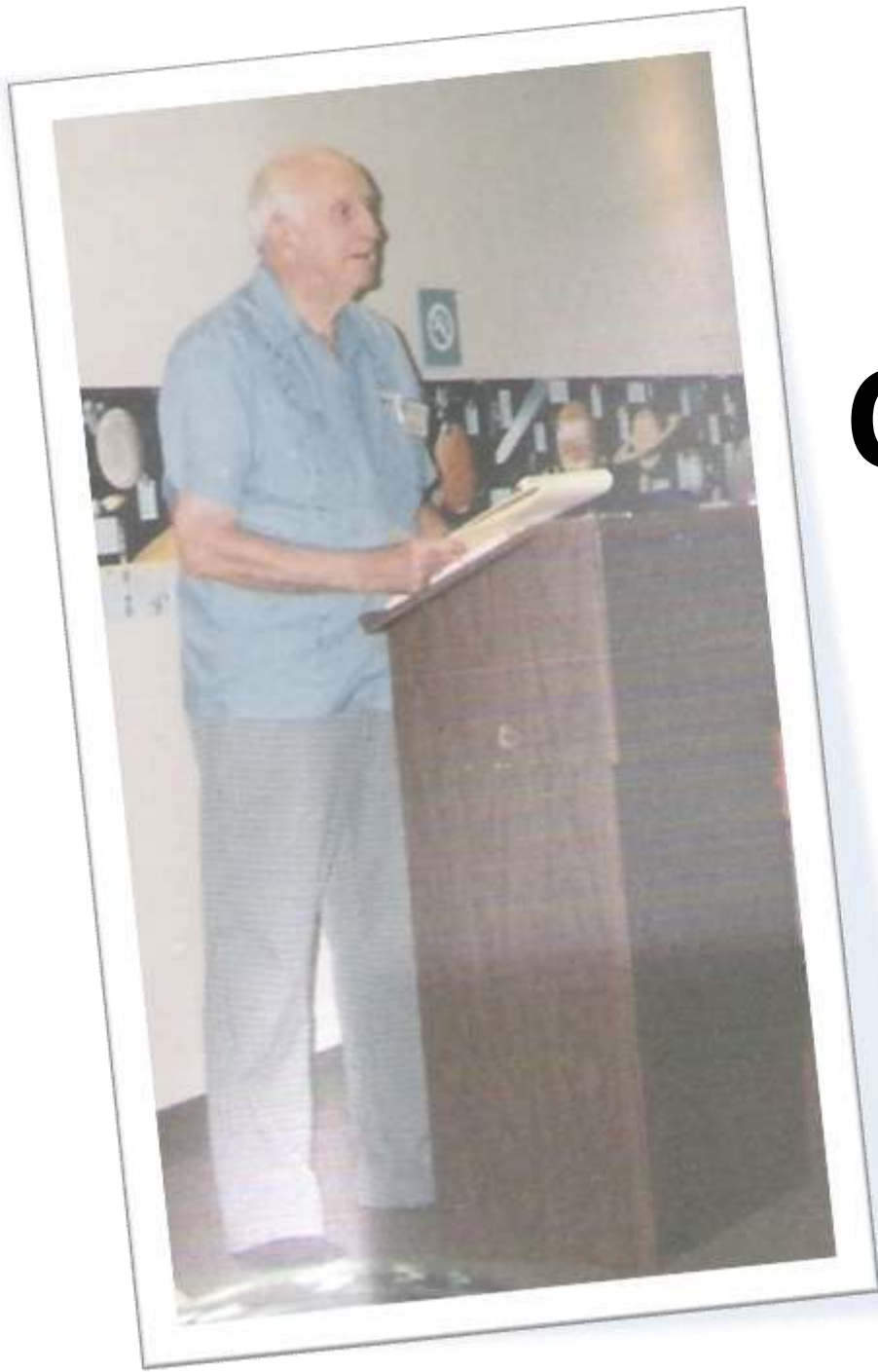


1989 LCGS Executive Board



Genealogy Department Cape Coral Library 1991





Carl Asbury

LCGS

President

1979-1980



Louise Egan

**LCGS
President
1991**



1993 Christmas Party

Seated: Evelyn Shafer, Shirley Ouelette

**Standing: Virginia Vezinski, Goldy Barnhardt,
Florence Garrison, Geraldine Schneller**



**In 1993
LCGS President
Marlene Freshwater
presents Charter
member and Past
President Carl Asbury
with Lifetime
Membership in
recognition of his
many years of service
to the society.**

1995 LCGS Board of Directors





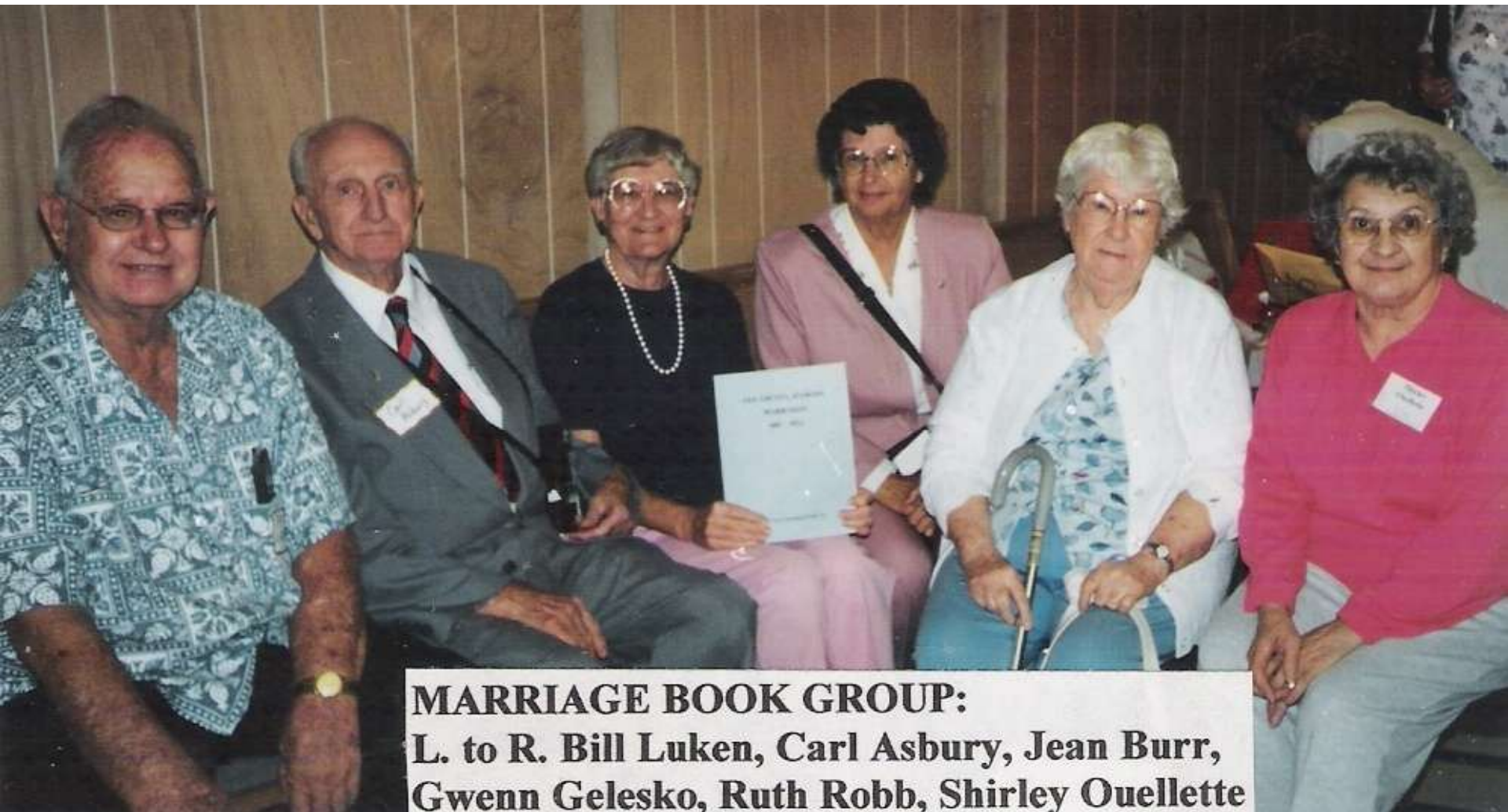
**Bob Sanderson
1995 President – Carol Sanderson,
1996 President – Peg Curtis**



Betty DeHaven & Betty Bohrer



Carol Sanderson & Carolyn Ford



MARRIAGE BOOK GROUP:

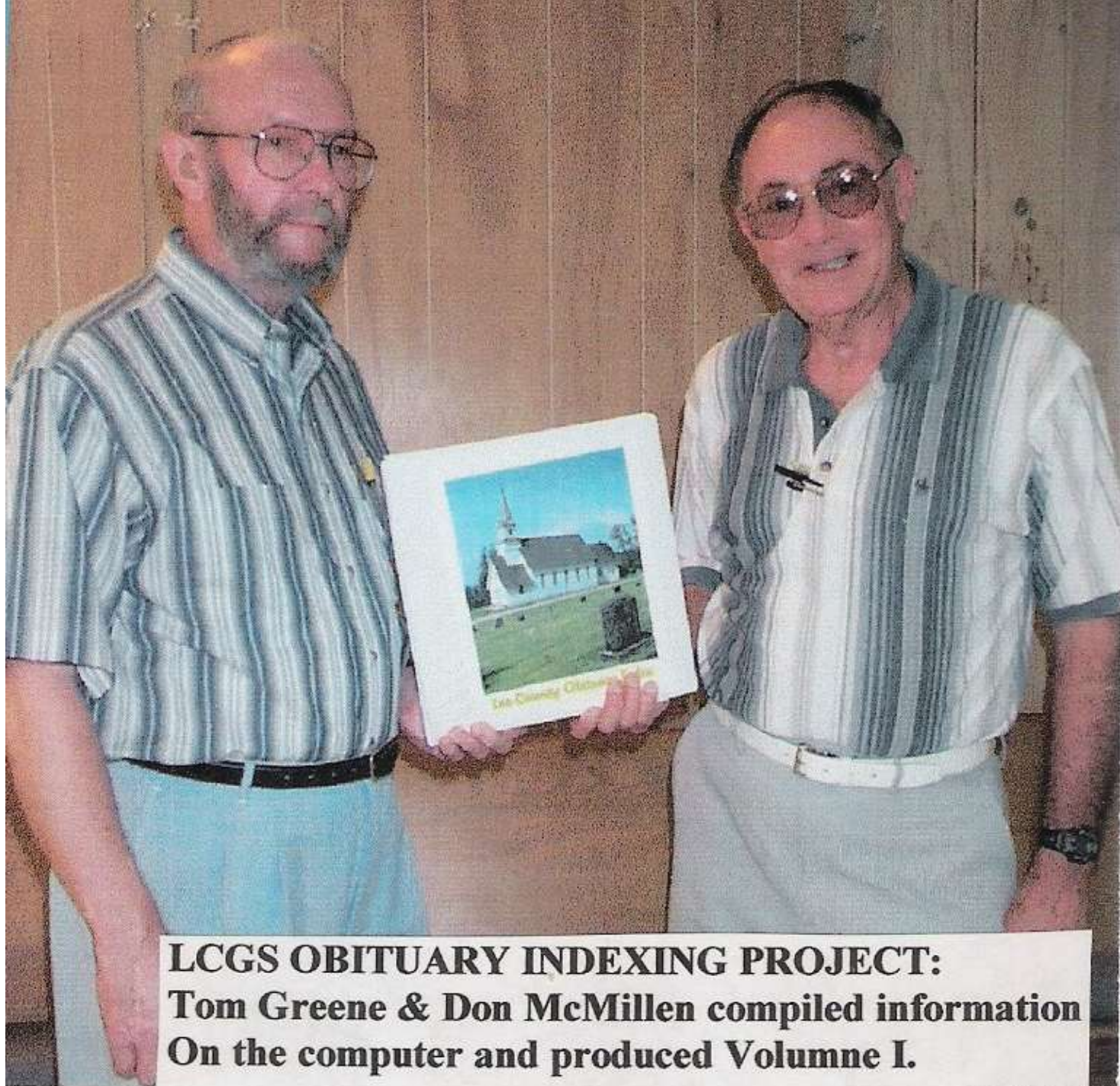
**L. to R. Bill Luken, Carl Asbury, Jean Burr,
Gwenn Gelesko, Ruth Robb, Shirley Ouellette**



OUR NEW MEMBERSHIP TEAM
Louise June, Rose Cornish & Marilyn Talbot



**Evelyn Shafer, Robb Robb,
Catherine Robbins, Jesse Hooper**



**LCGS OBITUARY INDEXING PROJECT:
Tom Greene & Don McMillen compiled information
On the computer and produced Volume I.**



New York Roots Special Interest Group

Obituary Indexing Projects

PROJECT #1:

The LCGS Obituary Indexing Project began in June with seven members reading newspaper microfilm at the Ft. Myers Library, Cape Coral Library and Edison Community College Library. In July, several additional members joined the workforce. The efforts of these volunteers are greatly appreciated.



PROJECT #2: A second obituary project started in July with a gathering of nine members who cut obituaries from the Ft. Myers News-Press, applied them to index cards, added descriptive information, and covered each card with clear adhesive paper. This project is a modified version of one started by the late Marie Boisvert. Thus, it has become known as "Marie's Obituary Project." It will supplement the LCGS Obituary Indexing Project, described above. More volunteers are welcome to join this work group, too.



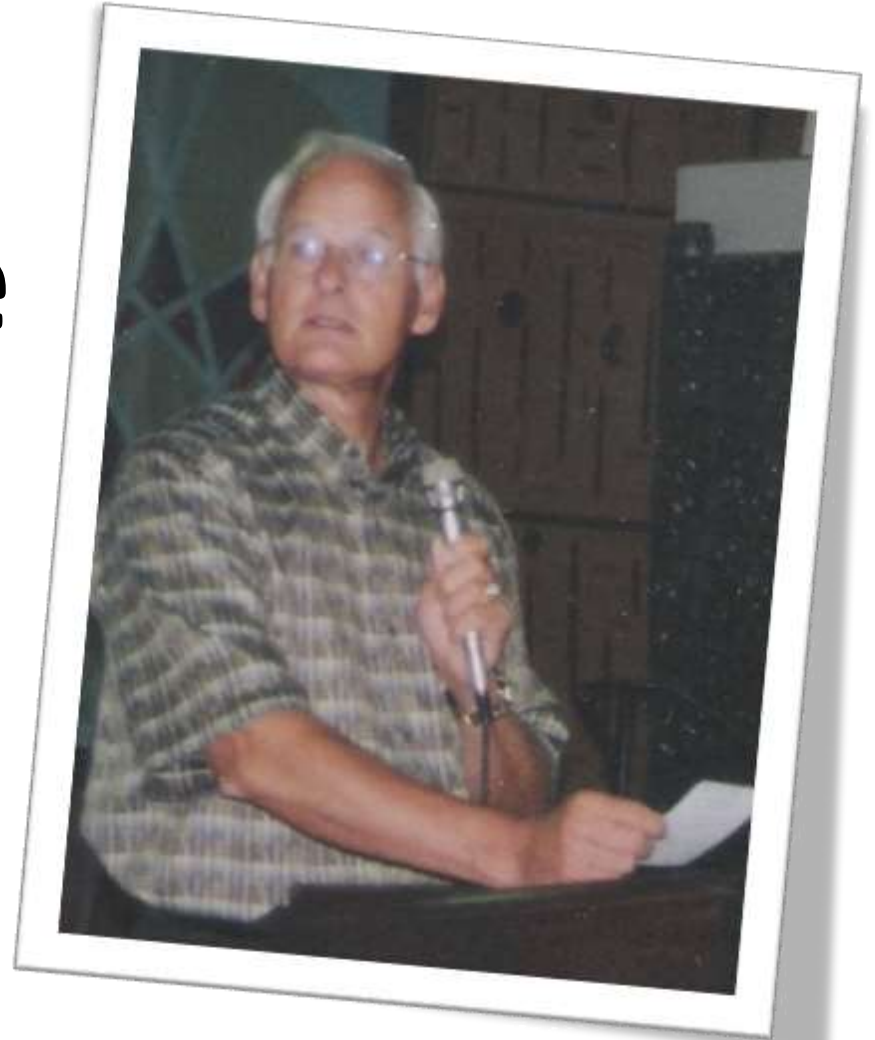


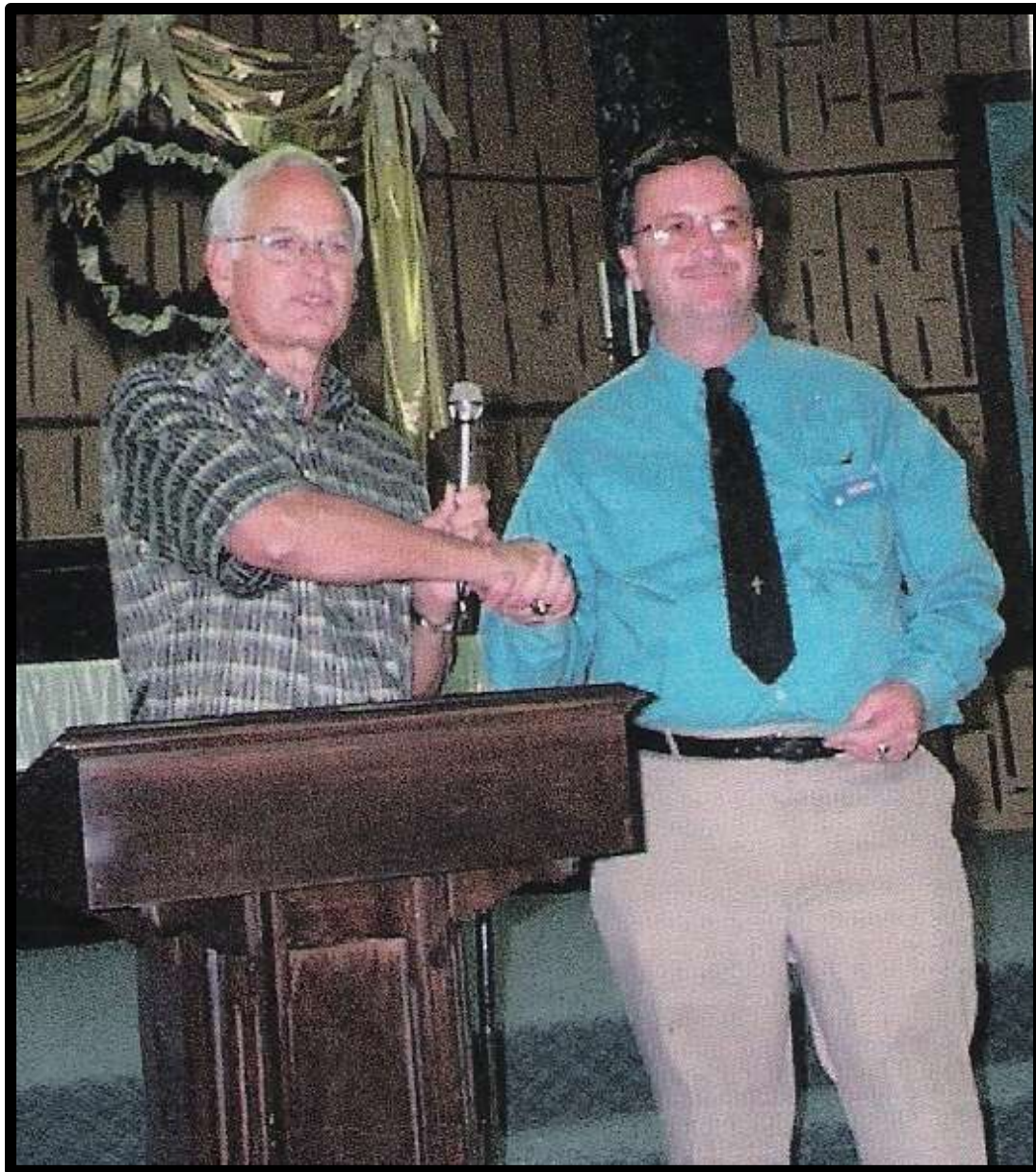
Shirley Ouelette

the



Bob Baechle
LCGS President
2000





**Bob Baechle
and
Bryan Mulcahy
1999**









Carole FORD
Reading Club

STORLEY
TABLE

READ!











**Lee County
Genealogical Society**
*Preserving the Past...
Enriching the Future*

Woman in light blue shirt standing behind the table, handling stacks of books.

Woman in light green shirt sitting at the table, wearing sunglasses and handling papers.





Lee County Genealogical Society

Preserving the Past...

Enriching the Future





**Lee County
Genealogical Society**
*Preserving the Past...
Enriching the Future*

Interested in learning to research your family tree? Take a look at our brochures or visit with the experts!

WE ALL TRAVEL



Lee County Genealogical Society



IRELAND

HELP WANTED
NO IRISH NEED APPLY

Gene
pres

Start
Checking
Your
Family Tree



IRELAND



















\$4.00 Seminar Special

**United States
Census Schedules
Population and
Non-Population
1790 - 1940**

Compiled by
Ann C. Emswiler
Published by
Genealogy.computer.com

\$4.00

**Let Your Family Tree
Grow & Root Your Genealogy Research**



\$14.95



Lee County
Genealogical Society
Preserving the Past
Enriching the Future





Barbara
M. B. B. B.
Member of Society

Historical Society



KITCHEN



NEED INFORMATION?
ASK HERE

OTM
OTM

200
200



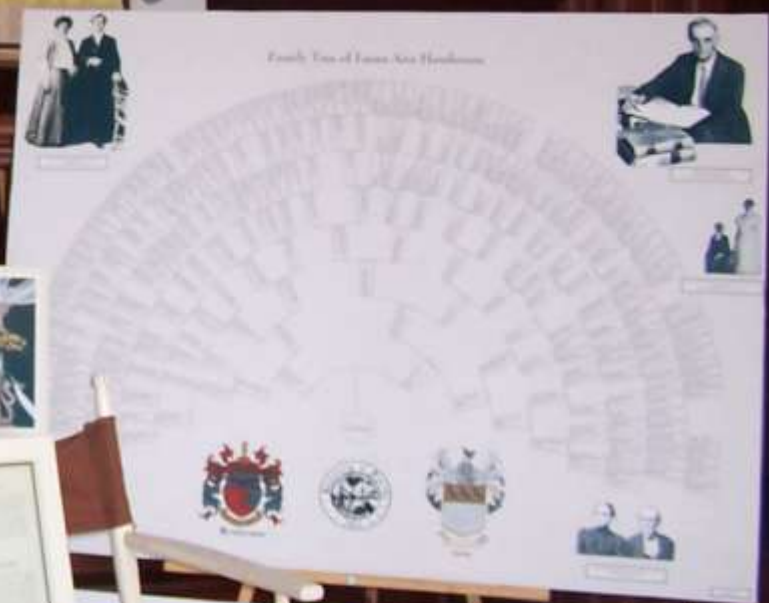
Youth Heritage Fair

***Saturday,
October 21, 2006
Burroughs Home
Fort Myers, Florida***

YOUTH HERITAGE
COMMUNITY
STORYTELLING







YOUTH HERITAGE FAIR
 On Saturday October 21, 2006
 Do you know who your ancestors are?

YOUTH HERITAGE FAIR
 On October 21, 2006
 Do you know who your ancestors are?

10/21/2006



10/21/2006



Volunteer
Name in Book

10/21/2006















Dr. [Name]
[Title]
[Address]
[Phone Number]
[Email Address]





Christmas
Welcome
Members and

















EGGS
MEMBERSHIP



















SHIRLEY'S
TABLE

MAKE ME
AN
OFFER
I CAN'T REFUSE
(The name of the company)





Lee County
Genealogical Society

Dulcimer People















SHIRLEY'S
TABLE









Lee County Genealogical Society

*Preserving the Past....
For the Future*



NO
SMOKING



Lee County
Genealogical Society
Preserving the Past
Enriching the Future



Start
Climbing
Your
Family Tree









- 1. 2000
- 2. 1990
- 3. 1980
- 4. 1970
- 5. 1960
- 6. 1950
- 7. 1940
- 8. 1930
- 9. 1920
- 10. 1910
- 11. 1900
- 12. 1890
- 13. 1880
- 14. 1870
- 15. 1860
- 16. 1850
- 17. 1840
- 18. 1830
- 19. 1820
- 20. 1810
- 21. 1800
- 22. 1790
- 23. 1780
- 24. 1770
- 25. 1760
- 26. 1750
- 27. 1740
- 28. 1730
- 29. 1720
- 30. 1710
- 31. 1700
- 32. 1690
- 33. 1680
- 34. 1670
- 35. 1660
- 36. 1650
- 37. 1640
- 38. 1630
- 39. 1620
- 40. 1610
- 41. 1600
- 42. 1590
- 43. 1580
- 44. 1570
- 45. 1560
- 46. 1550
- 47. 1540
- 48. 1530
- 49. 1520
- 50. 1510
- 51. 1500
- 52. 1490
- 53. 1480
- 54. 1470
- 55. 1460
- 56. 1450
- 57. 1440
- 58. 1430
- 59. 1420
- 60. 1410
- 61. 1400
- 62. 1390
- 63. 1380
- 64. 1370
- 65. 1360
- 66. 1350
- 67. 1340
- 68. 1330
- 69. 1320
- 70. 1310
- 71. 1300
- 72. 1290
- 73. 1280
- 74. 1270
- 75. 1260
- 76. 1250
- 77. 1240
- 78. 1230
- 79. 1220
- 80. 1210
- 81. 1200
- 82. 1190
- 83. 1180
- 84. 1170
- 85. 1160
- 86. 1150
- 87. 1140
- 88. 1130
- 89. 1120
- 90. 1110
- 91. 1100
- 92. 1090
- 93. 1080
- 94. 1070
- 95. 1060
- 96. 1050
- 97. 1040
- 98. 1030
- 99. 1020
- 100. 1010
- 101. 1000
- 102. 990
- 103. 980
- 104. 970
- 105. 960
- 106. 950
- 107. 940
- 108. 930
- 109. 920
- 110. 910
- 111. 900
- 112. 890
- 113. 880
- 114. 870
- 115. 860
- 116. 850
- 117. 840
- 118. 830
- 119. 820
- 120. 810
- 121. 800
- 122. 790
- 123. 780
- 124. 770
- 125. 760
- 126. 750
- 127. 740
- 128. 730
- 129. 720
- 130. 710
- 131. 700
- 132. 690
- 133. 680
- 134. 670
- 135. 660
- 136. 650
- 137. 640
- 138. 630
- 139. 620
- 140. 610
- 141. 600
- 142. 590
- 143. 580
- 144. 570
- 145. 560
- 146. 550
- 147. 540
- 148. 530
- 149. 520
- 150. 510
- 151. 500
- 152. 490
- 153. 480
- 154. 470
- 155. 460
- 156. 450
- 157. 440
- 158. 430
- 159. 420
- 160. 410
- 161. 400
- 162. 390
- 163. 380
- 164. 370
- 165. 360
- 166. 350
- 167. 340
- 168. 330
- 169. 320
- 170. 310
- 171. 300
- 172. 290
- 173. 280
- 174. 270
- 175. 260
- 176. 250
- 177. 240
- 178. 230
- 179. 220
- 180. 210
- 181. 200
- 182. 190
- 183. 180
- 184. 170
- 185. 160
- 186. 150
- 187. 140
- 188. 130
- 189. 120
- 190. 110
- 191. 100
- 192. 90
- 193. 80
- 194. 70
- 195. 60
- 196. 50
- 197. 40
- 198. 30
- 199. 20
- 200. 10

Lee County Genealogical Society

Preserving ...
Enriching the Future

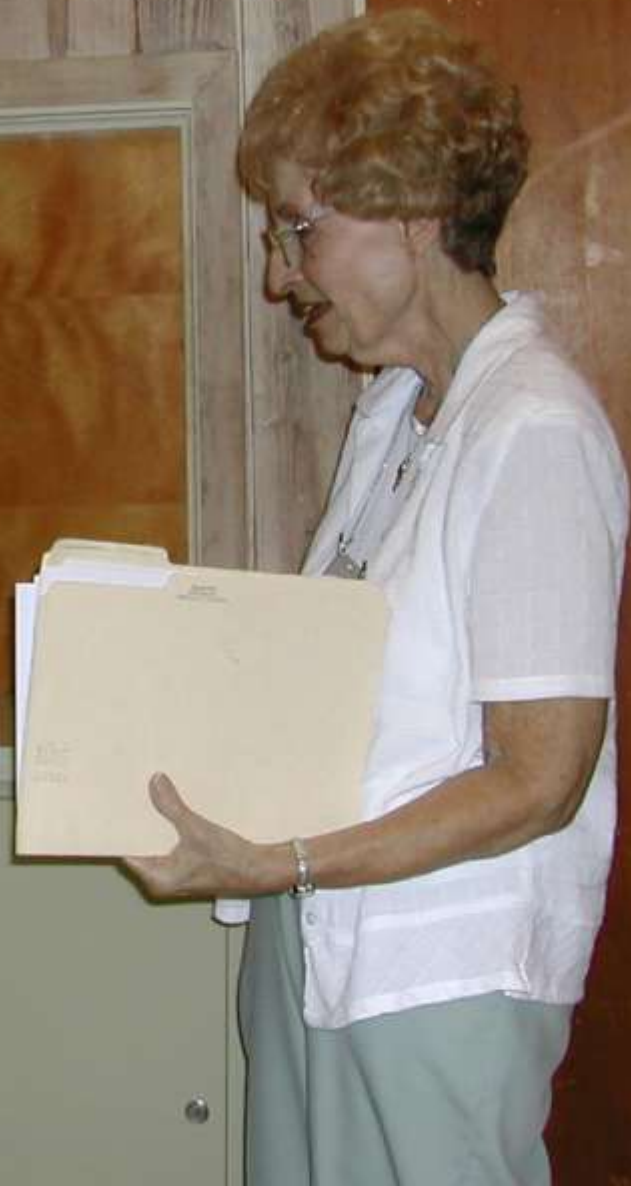






LINES
AS A TOOL
Carol Woolley Wether
November 14, 2009

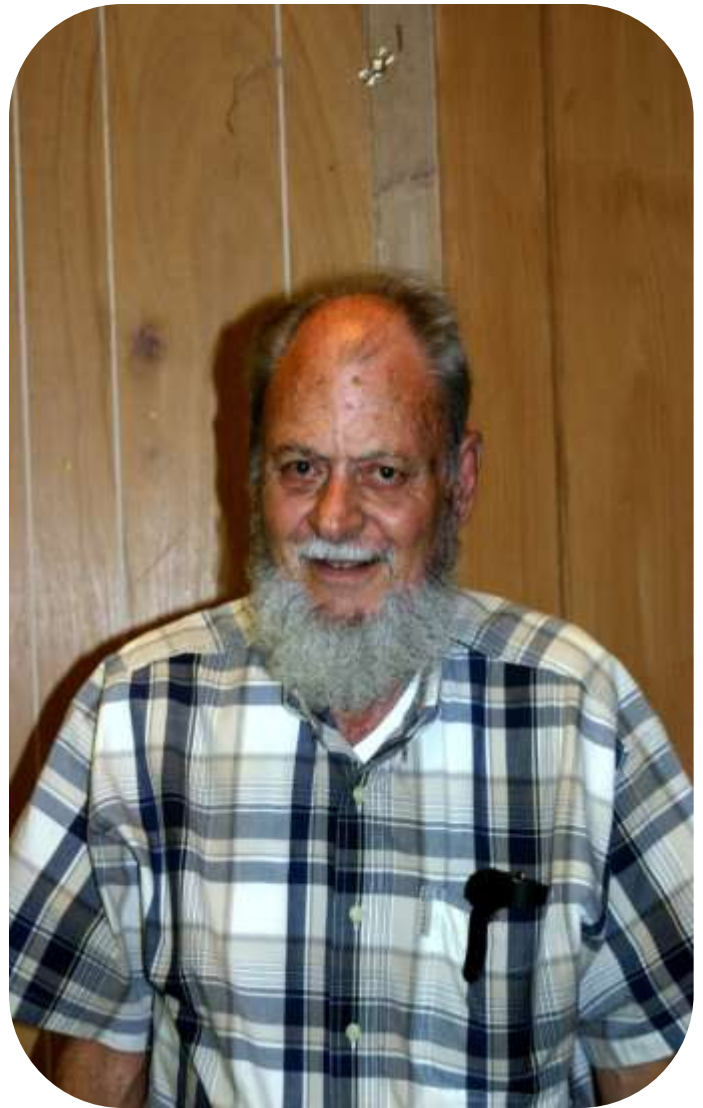














Carolyn Ford
Adult Education Chair



Fort Myers-Lee County
Genealogical Society
Preserving the Past
Enriching the Future







Census Substitutes
&
State Census Records

Volume 2 - Western States

Census Substitutes
&
State Census Records

Volume 1 - Eastern States

By William Dollaphide
Illustrated by Leiford K. Metzler

Colonial Families
of Delaware

Volume 2

Colonial Families
of Delaware

Volume 3
2nd Edition

F. Edward Wright

Colonial Families
of Delaware

Volume 9

Colonial Families
of Delaware

Volume 5

F. Edward Wright

Colonial Families
of Delaware

Volume 4

F. Edward Wright

Colonial Families
of Delaware

Volume 4

F. Edward Wright

Colonial Families
of Delaware

Volume 2

F. Edward Wright

Colonial Families
of Delaware

Volume 1


F. Edward Wright

DO
T
ENEALOGIC
AT
FORT MYE

Scott
Emig

DONATIONS
TO THE
LOGICAL CO
AT THE
ORT MYERS L

Colonial Families
of Delaware
Volume 7
Ralph and Catherine Stewart



**GERMANS
★ TO
AMERICA**
List of Passengers Arriving
at U.S. Ports
Volume 21
May 1860 - September 1862
Edited by
A. Glazer
and
P. Wilton Filby

Index to
MARRIAGES AND DEATHS
in the
NEW YORK HERALD
1864-1870
Compiled by
JAMES SCHULZ
Volume 1

Index to
MARRIAGES AND DEATHS
in the
NEW YORK HERALD
1871-1875
Compiled by
JAMES SCHULZ
Volume 2
FOR
RENT
AND
PURCHASE
\$10.00

East New Jersey
Land Records
1720-1763
Books 12 and 13
FOR
RENT
AND
PURCHASE
\$10.00
Richard S. Hochstetler



East New Jersey
Land Records
1764-1769
Books 14 and 15
FOR
RENT
AND
PURCHASE
\$10.00
Richard S. Hochstetler

East New Jersey
Land Records
1770-1775
Books 16 and 17
FOR
RENT
AND
PURCHASE
\$10.00
Richard S. Hochstetler

East New Jersey
Land Records
1776-1781
Books 18 and 19
FOR
RENT
AND
PURCHASE
\$10.00
Richard S. Hochstetler

East New Jersey
Land Records
1782-1787
Books 20 and 21
FOR
RENT
AND
PURCHASE
\$10.00
Richard S. Hochstetler

East New Jersey
Land Records
1788-1793
Books 22 and 23
FOR
RENT
AND
PURCHASE
\$10.00
Richard S. Hochstetler



WINE OF THE MONTH CLUB MEET AREA

WINE OF THE MONTH CLUB MEET AREA







JOY MORRIS

The Witch Is In

MARY STANWELL







Lee County Genealogical Society

Preserving the Past....

Enriching the Future



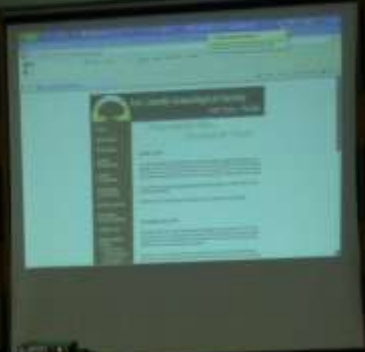




Frank Long
LCUS Treasurer







Lee County Genealogical Society
Preserving the Past...
Enriching the Future

Mark
Hester







**Lee County
Genealogical Society**
*Preserving the Past....
Enriching the Future*







HELP WANTED
NO IRISH NEED APPLY

NEXT COMP
The
FAMILY

FAMILY





HELP WANTED
NO IRISH NEED APPLY

Hilton





NAME
Dr. Eric
Strauss
Speaker









FELLOWSHIP HALL















Neil Smith
LCGS Director





HELLO
My name is
Bill

Root
Beer











Faye Ann
ROBINSON







AGE SALE
FURNITURE
TRASH & TREASURE
SATURDAY, July 25
8am - 1 pm
St. Hilary's Church
Corner McGregor & Colonial
Clothing for Family
Books, Linens, Toys
Games, Collectibles, Misc.
Small Appliances, Misc.
Information: (252) 938-1000





Carl
MEYER
2nd Vice President













Lee County
Genealogical Society
Preserving the Past,
Zuri...



Happy
St. Patrick's
Day







Happy
Valentine's
Day



Lee County
Genealogical Society



SHIRLEY'S
TABLE

MAKE ME
AN
OFFER
I CAN'T REFUSE

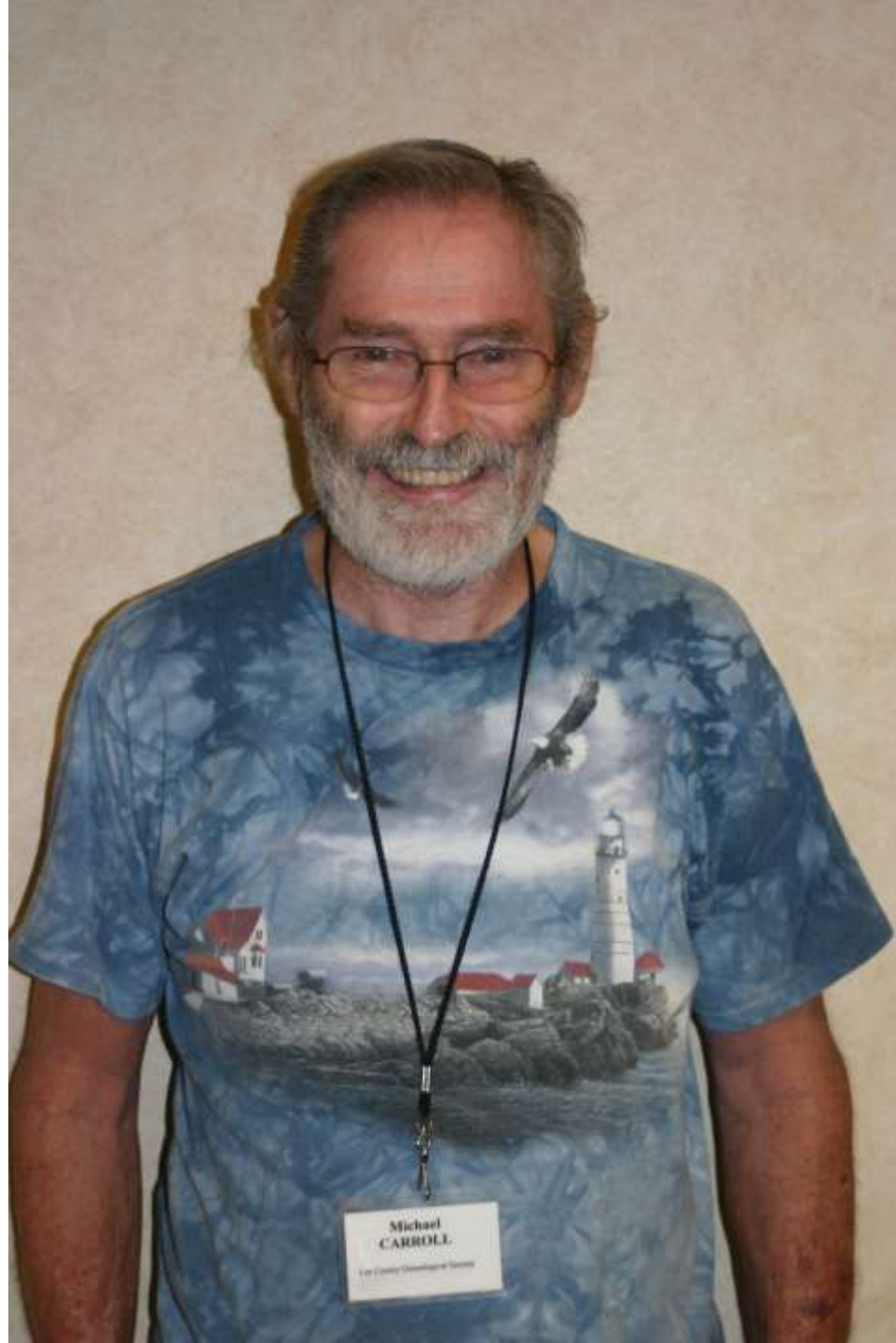












Michael
CARROLL
© 2007 Oceanographic Society









Ruth E.
LCGS Pres



Carol Buckley Ruffalo
2013 President

Carol Ruffalo







03/08/2008





03/08/2008





Harvey-Engelhardt



Metz

Funeral Homes

& Cremation Service





**Lee County
Genealogical Society**

*Preserving the Past
Promoting the Future*





**Lee County
Genealogical Society**

*Preserving the Past...
Enriching the Future*





Family History Month 2008 Essay Contest

Sponsored by
Lee County Genealogical Society, Inc.



**Seth Marino — 1st Place
Chase Zahalka — 2nd Place**

Honorable Mention

Robert Burkert
Jason Burns
Savanah Ceilley
Lauren Cohen
Karen Downie
Yoanna Gueorguiev
Rachel Maguire
Tyson O'Gilvie

Maria Ortiz
Vishnu Patel
Cody Prebble
Eden Riffelmacher
Luis Rodriguez
Michael Santucci
Josiah Vega
Kiara Zavala



JOY MORRIS

The Witch Is In









FOR WINDOWS • THE MASTER GENERALIST
SHEEN III • SHOGREN ROY (2018)



Neil S...
LCGS Direct...



GIVE US THIS DAY

OUR DAILY BREAD

JANE TRACY
Elder Care Dept.

CAUL A. ENARY
Elder Care Dept.





Frank Long
LCGS Treasurer

Palm Reader News











03/08/2008



















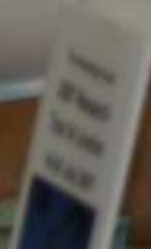








Carolyn Ford
Adult Education Chair



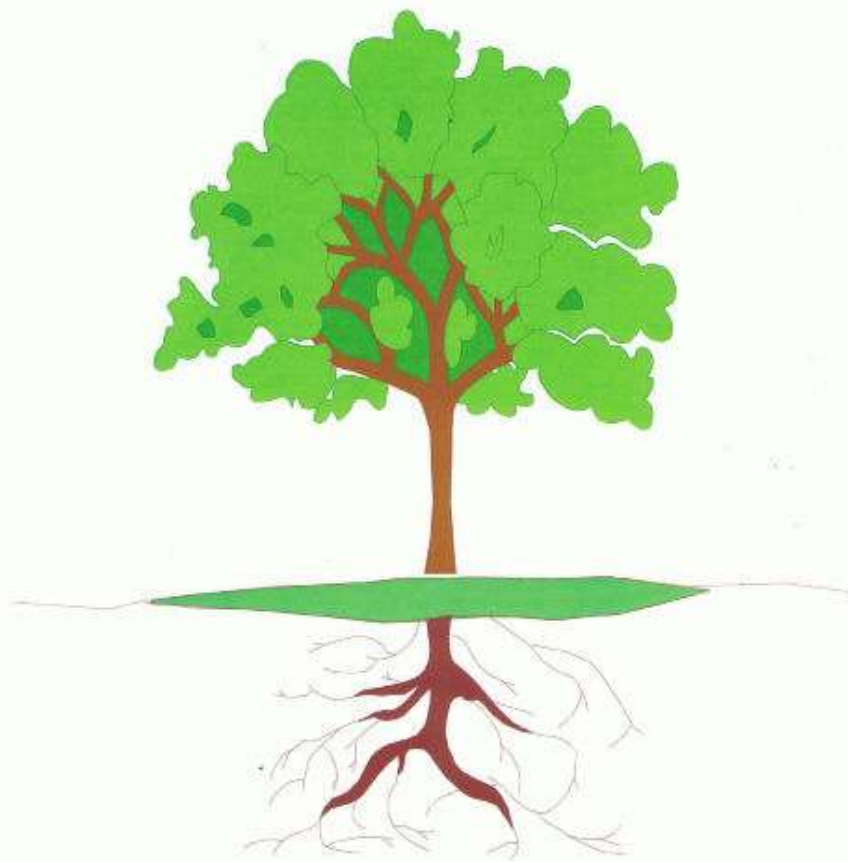






Let's Plant a Family Tree

How to Start Your Genealogy Research



Ruth Emmel





Shirley's
Table



Information
Table







Shirley's Table

Books For Sale

Shirley's Table

Michigan's HABITANT





DINNER CHOICES:
1. TAKE IT
2. LEAVE IT



SPEAK

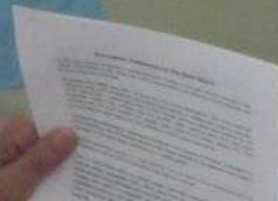
Explor



Thank you
LCGS
Volunteers



2015/05/21

















2015/04/16





2015/04/16



2015
Lee County
Genealogical Society
High School
Youth Award

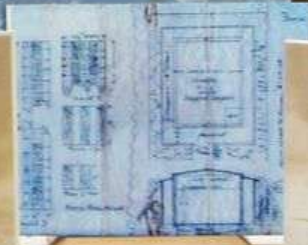
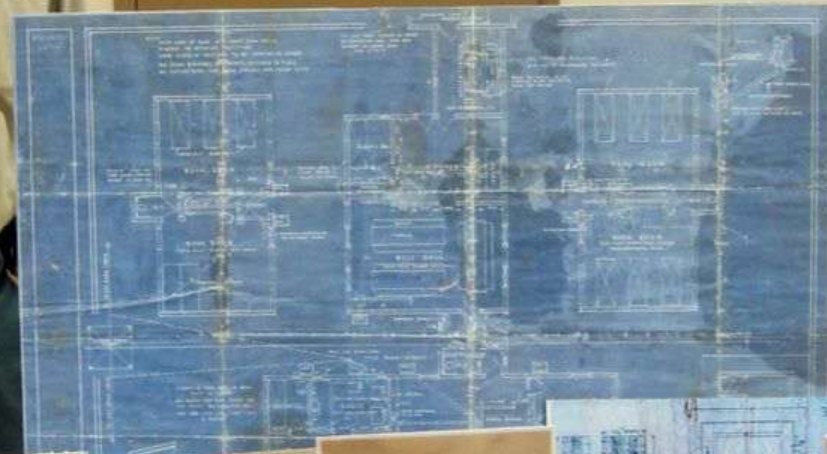
THIS CERTIFICATE IS AWARDED TO
TAYLOR KENT

In recognition of his understanding of genealogical research
and documentation as evidenced by thorough transcriptional
skills and accurate supporting evidence.

Presented to Taylor Kent
Presented by Board of Directors
Presented by Lee County Genealogical Society

2015/05/21





U.S. Postal Service Buses, San Diego, Feb. 24, 1955

Charles "Chas" Gould
First Director, Incorporated and
Public Knowledge

Charles "Chas" Gould
First Director, Incorporated and
Public Knowledge

Handwritten notes and documents on the table, including a page with the heading 'Public Knowledge'.







2015 Board of Directors: Carol Rooksby Weidlich, Mary Smelter, Maureen Shannon-Jefferson, Linda Murtaugh, Carol Silverman, Bev Sierpina, Bill Simons, Ruth Emmel, Carolee Dunivan and Connie Lizak.






2015 Bob Baechle Award for Overall Leadership to Carol Rooksby Weidlich.



2015 Jessie Hooper Library Awareness Award to Connie Mumm.





**Lee County
Genealogical Society**

*Preserving the Past...
Enriching the Future*







2011 Fall Seminar
Saturday, October 22, 2011
Brian Smith and Gary Smith
10 a.m. to 11:45 a.m.
\$10.00 per person
Gary Smith:
Tax Records: Why Do We Care?
Diana and Gary Smith:
He Said/She Said: Methods
for Organizing Your
Genealogical Records

Evelyn Link
November 2011
Lee County Genealogical Society, FL

Lee County
Genealogical Society
Preserving the Past...
Enriching the Future



**Enjoy these
memories!**

***Preserving The Past ...
Enriching The Future***

